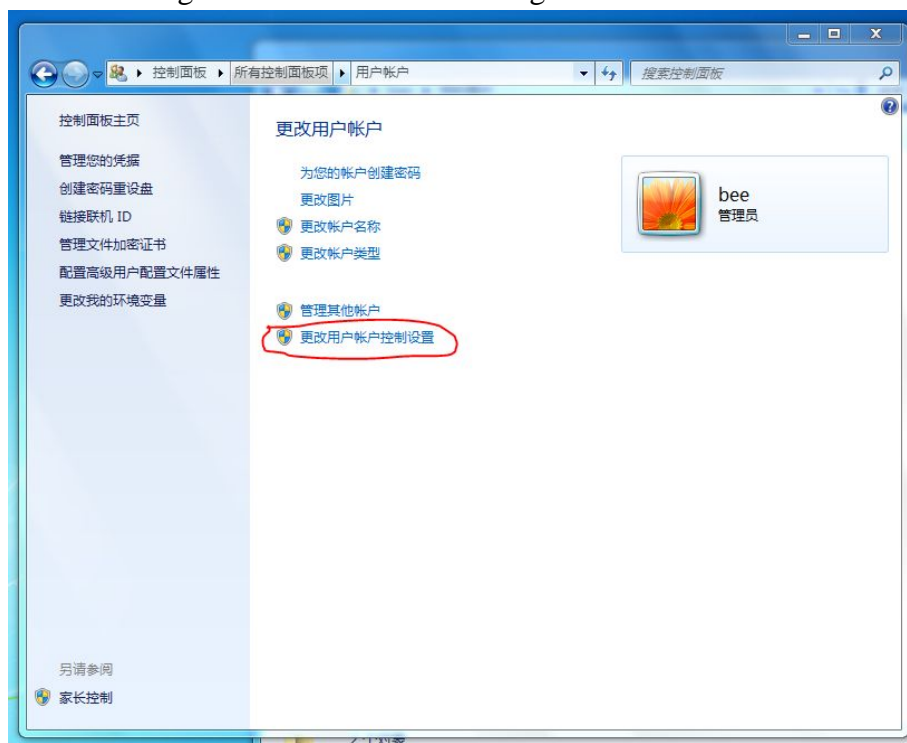


Instructions for WIN7 64 bit MASTouch USB Driver Installation

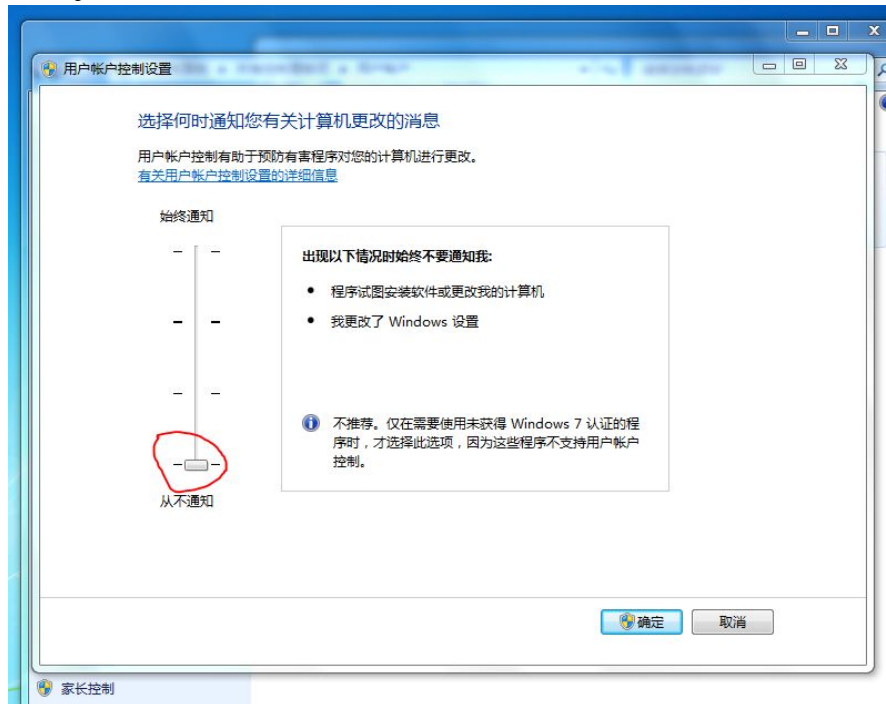
1. Click User Account in Control Panel



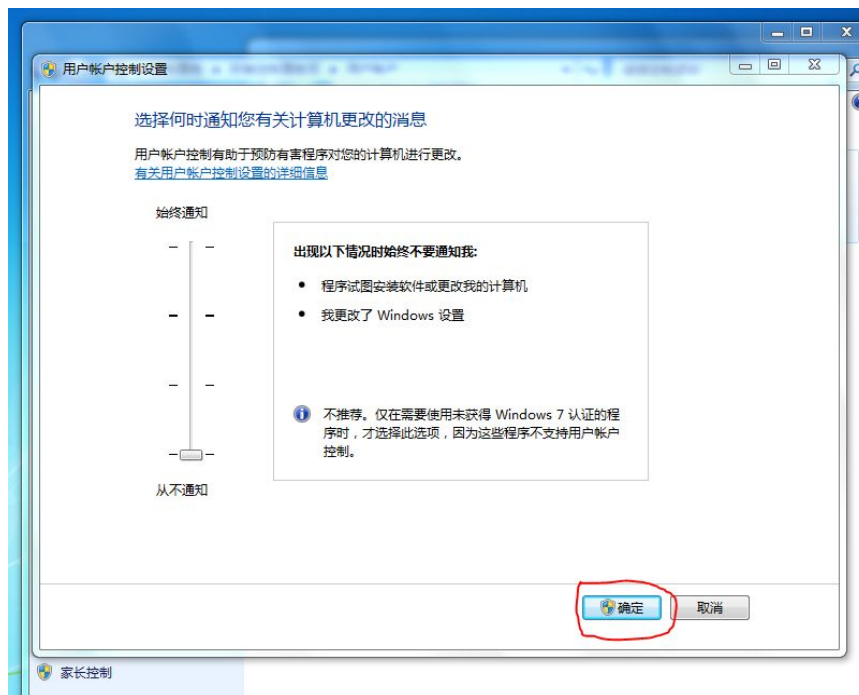
2. Click change user active control setting



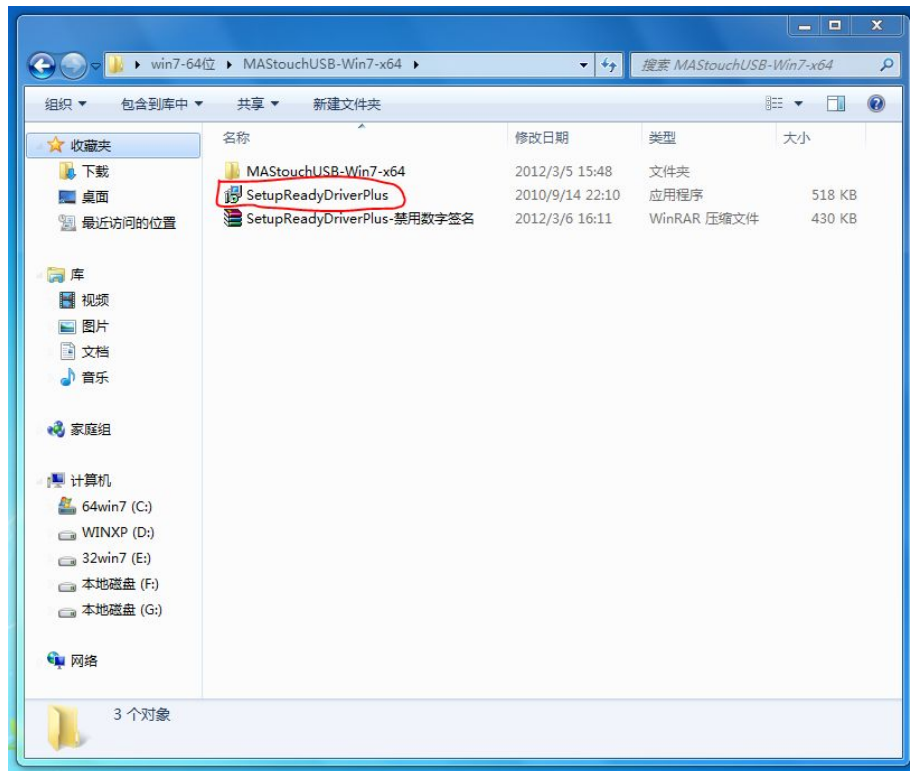
3. Adjust to never notice



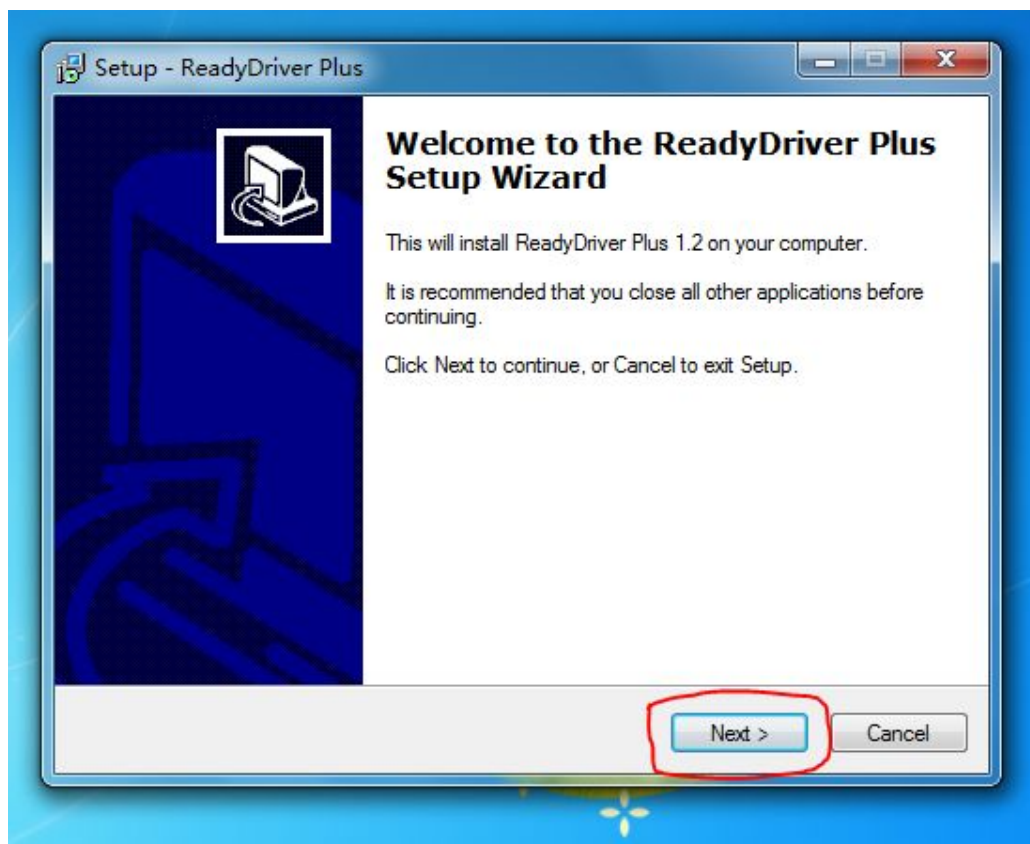
4. Click OK



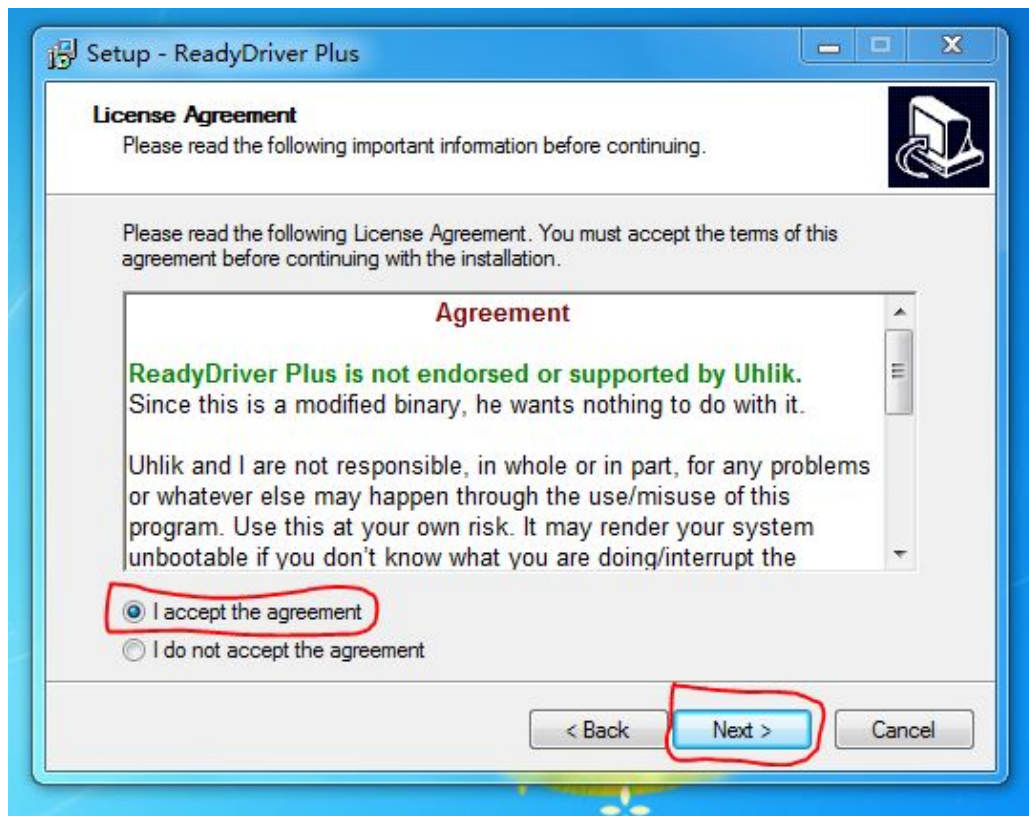
5. Decompress file SetupReadyDriverPlus- Disable digital signature, double click to run SetupReadyDriverPlus.exe.



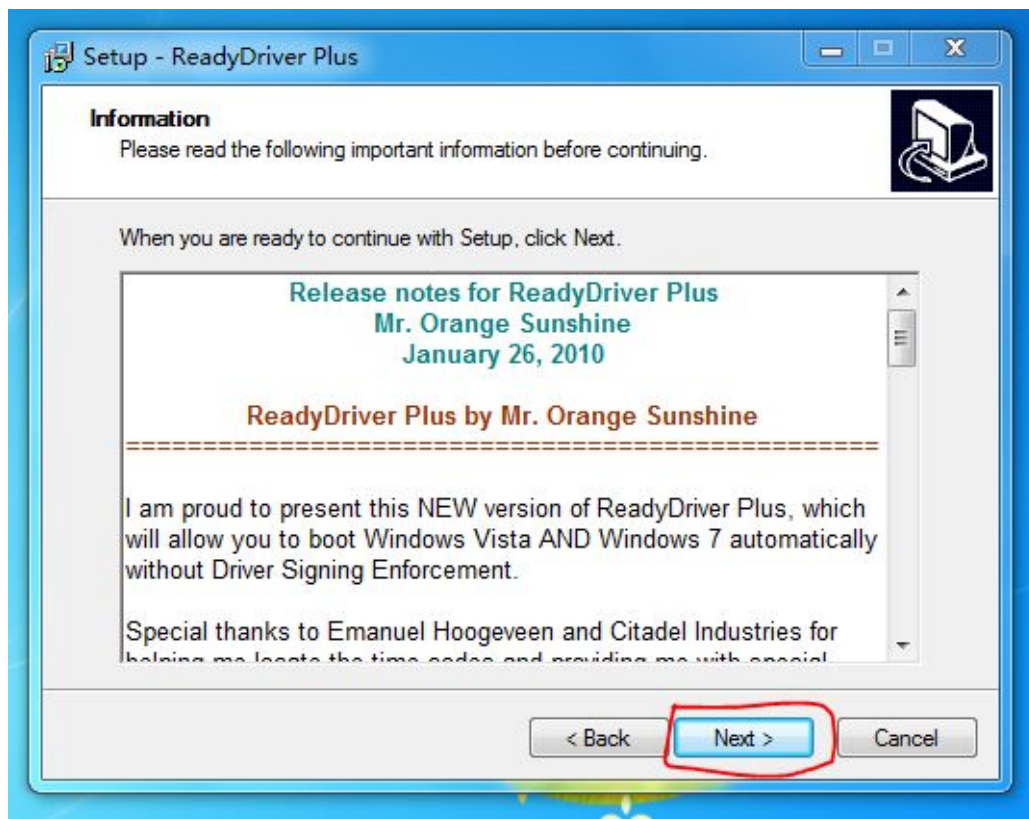
6. Click Next



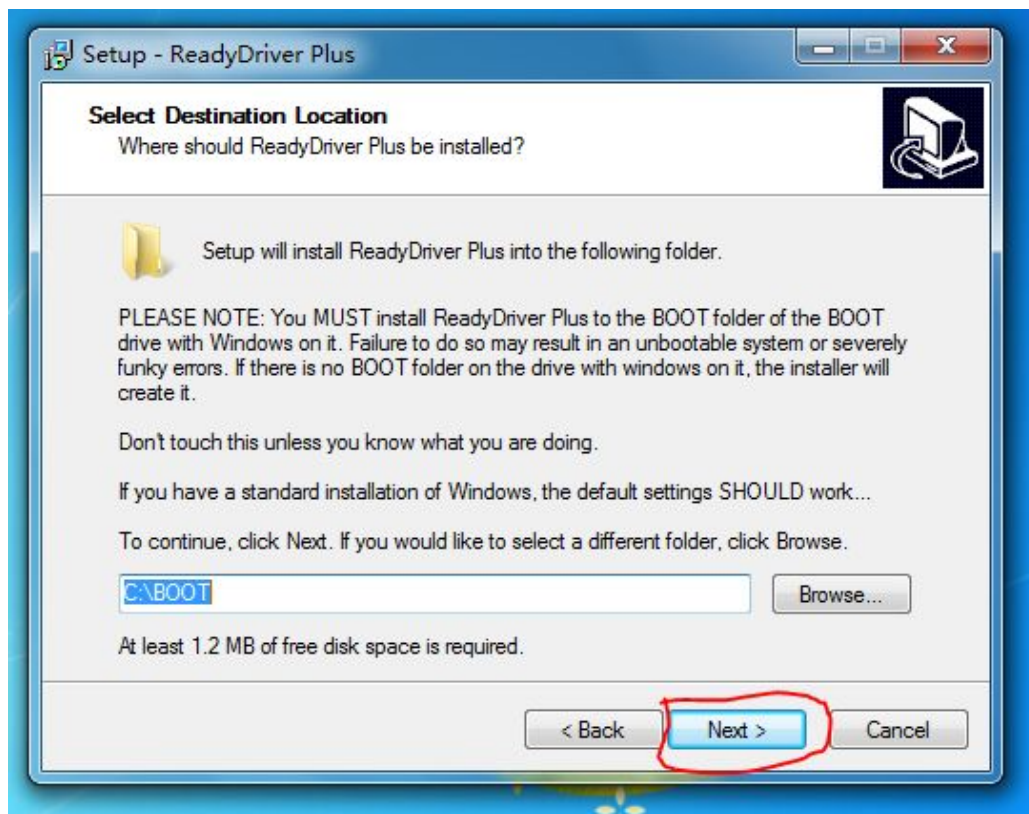
7. Choose I accept the agreement and click Next.



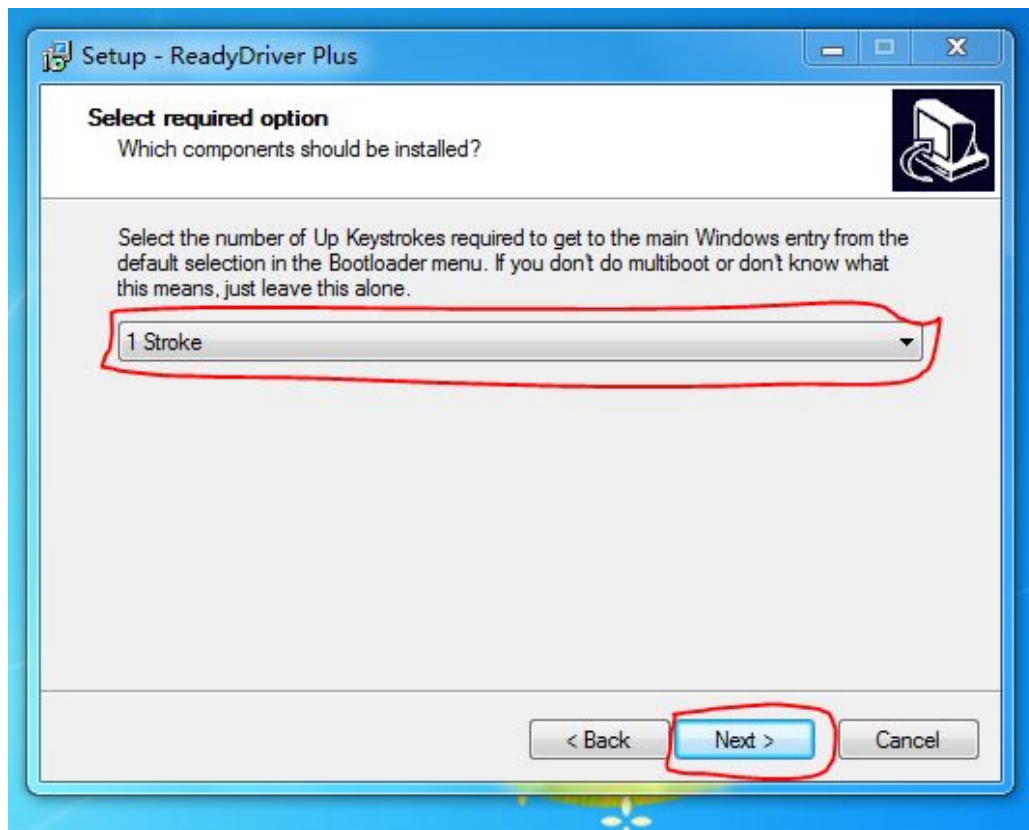
8. Click Next



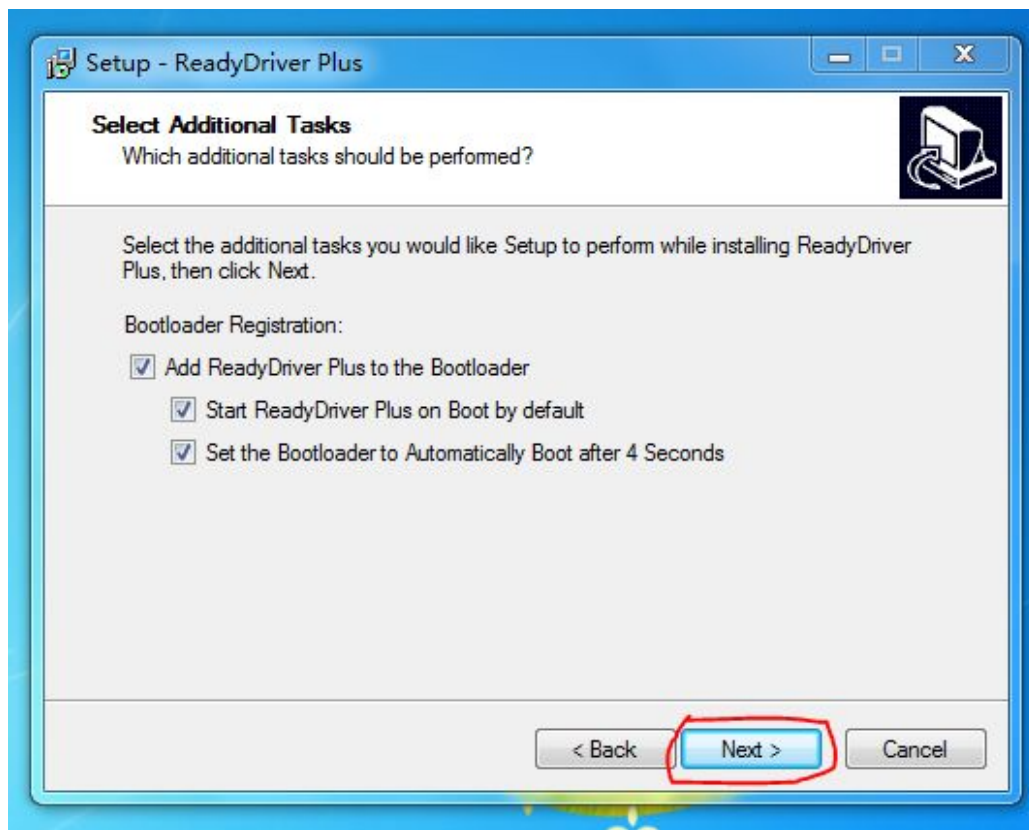
9. Click Next



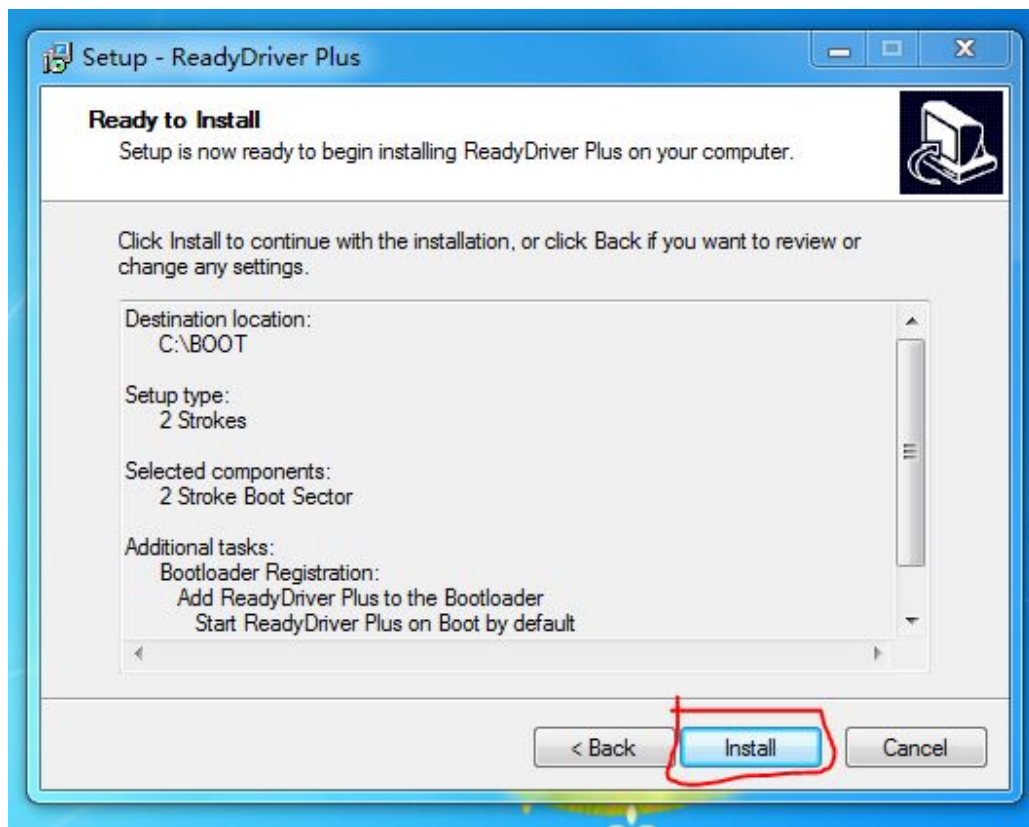
10. Press up arrow in keyboard repeatedly when restarting the system in order to enter disable driver signature enforcement in win7 64 bit system. System will automatically complete the operation when starting up. (1 Stroke means cursor will automatically scroll up one stroke when restarting the system while 2 Stroke means cursor will automatically scroll up two strokes when restarting the system.) Click Next.



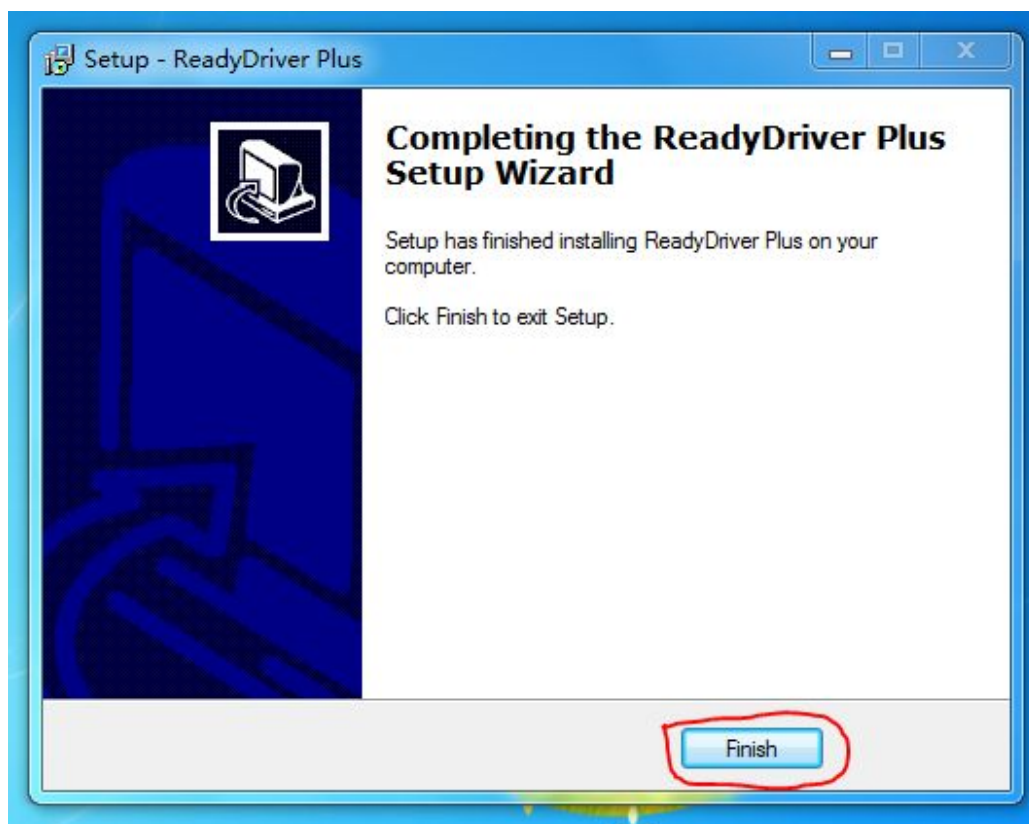
11. Click Next



12. Click install

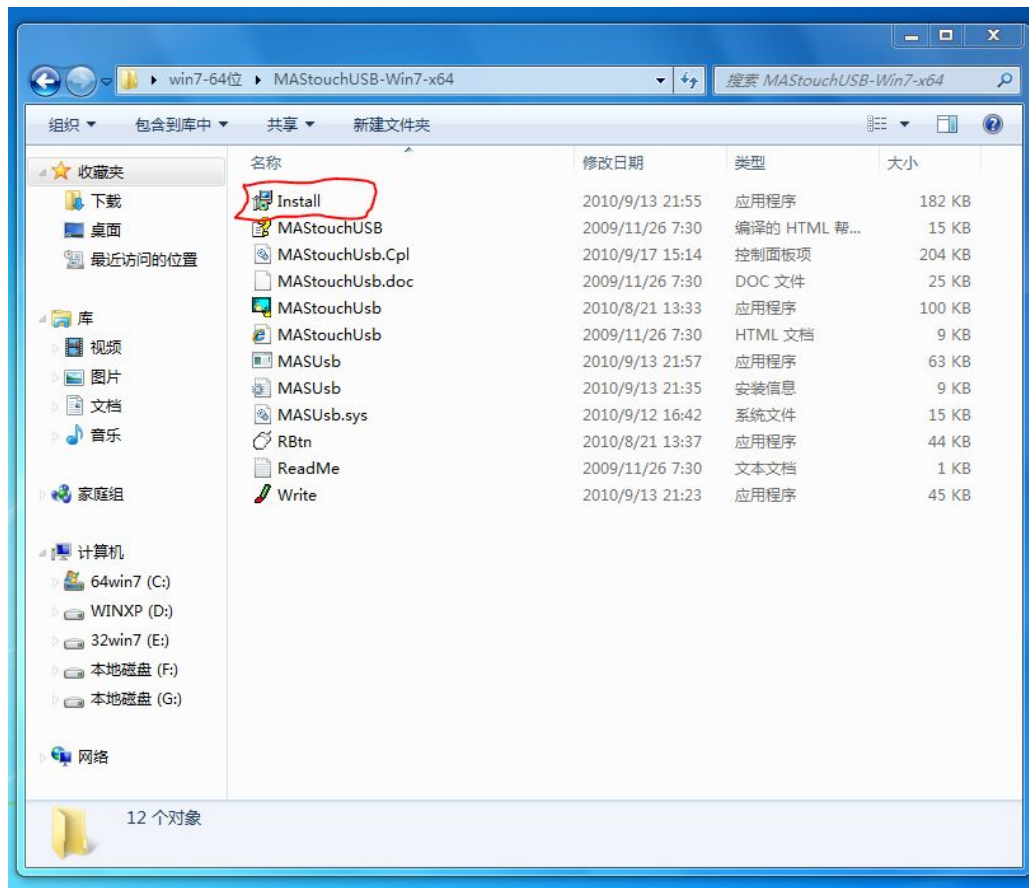


13. Click Finish

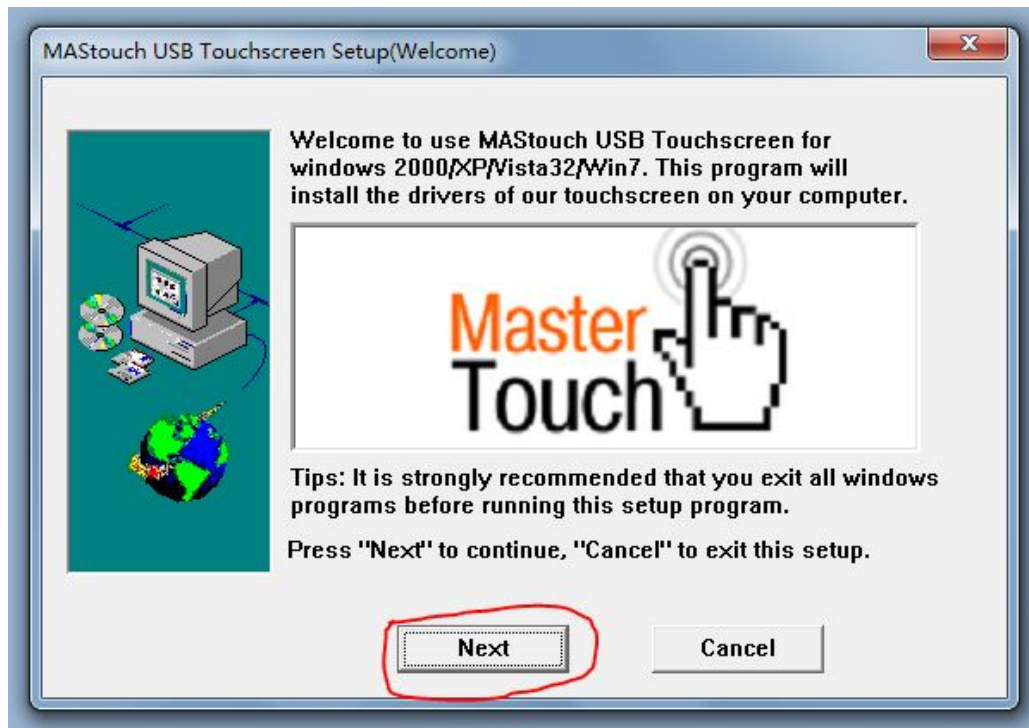


14. Restart the system, system will automatically enter disable driver signature enforcement mode. After entering the system, make sure touch screen, controller and cables are all connected, and then decompress file MASTouchUSB-Win7-x64

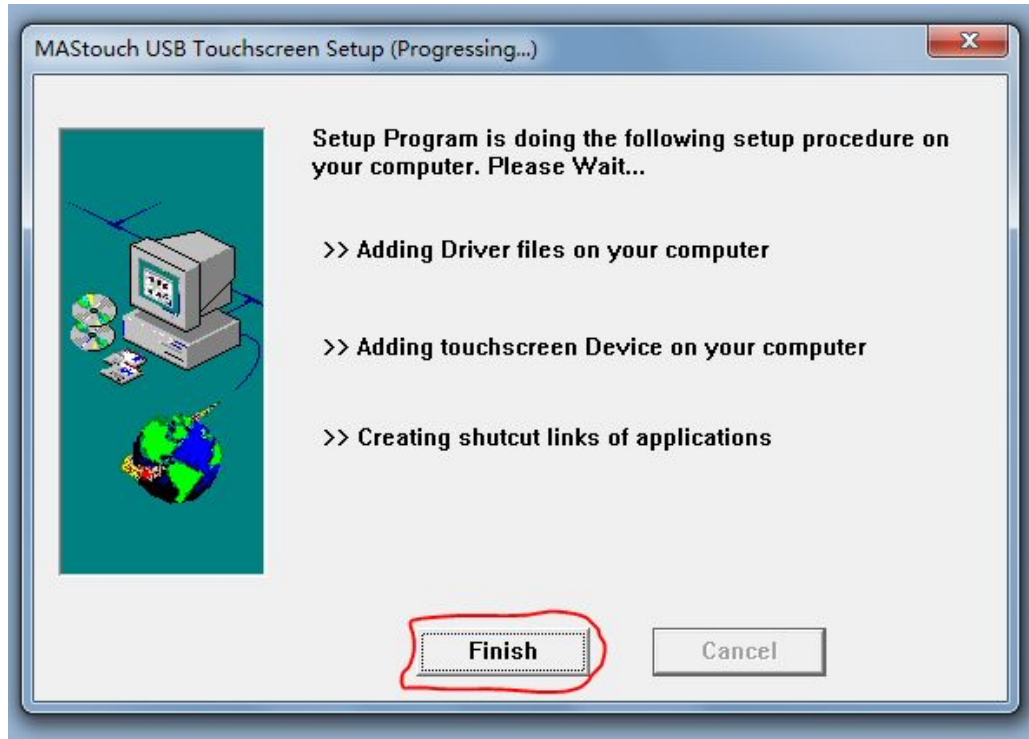
and click Install.exe.



15. Click Next



16. Click Finish to complete installation.

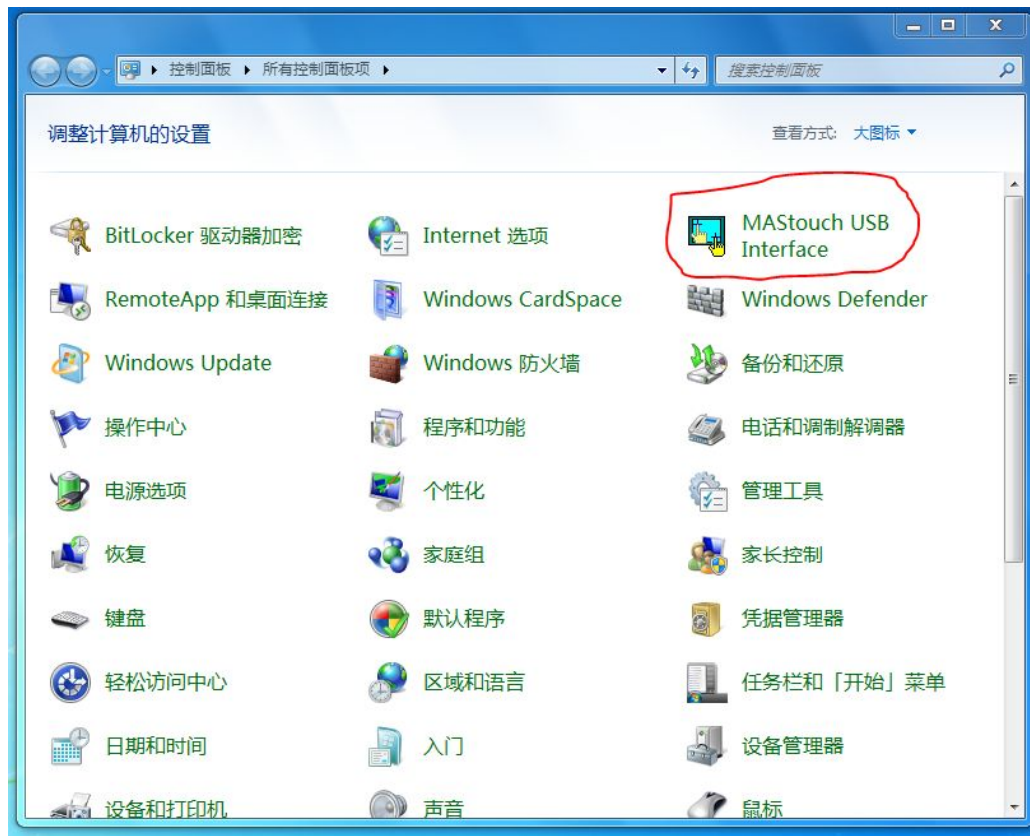


P.S.: If an error occurs in procedure, please check whether controller and touch screen are connected properly. If connection is normal, before install the driver, cursor will locate on upper-left when touching the touch screen. Moreover, please check whether system has entered disable driver signature enforcement, whether adjust the purview to never notice and whether antivirus software has intercepted.

17. Click Yes to restart the system



18. Open control panel——MAStouch USB Interface.



19. Calibration, touch, sound can be adjusted in this driver panel.

